

NEXGEN Control Room

NexGen is a large radio automation system running at KRFC 88.9FM *Radio Fort Collins*.

Frequently we just call it "Automation" for short.

The NexGen fader on the board turns on-air automation On and Off and the volume Up and Down.

The Control Room is the interface that you will interact with in NexGen.

It is a visual representation - a playlist - of Events... songs, programs, commands, and spots that the computer would play in Automation if not taken over by a live programmer.

This initial training walks you through the simple commands you will need to run your show

Please stick with these instructions and commands to learn how to use the interface.

A good rule to follow:

If you don't know what a button does, please don't click it.

The screenshot displays the NexGen Control Room interface. At the top, it shows the date and time: Tuesday, December 11, 2018, 15:23:42 (36:18). The station call sign KRFC is prominently displayed. The interface is divided into several sections:

- Event Block:** Shows the current event as "Idle".
- Playlist Table:** A table with columns for Pot #, Status, Air Time, Description, Event #, Length, and Text. The playlist includes various songs and segments, such as "Can't Sleep" by Garv Clark Jr., "I'm On My Way" by The Proclaimers, "Top of Hour", "Love And Blessings" by Paul Simon, "Marie Laveau" by Dr. John, "Blue Sky Mine" by Midnight Oil, "Cognac" by Buddy Guv, "Gone Gone Gone" by Robert Plant & Alison Krauss, and "Shakin' Shakin' Shakes" by Los Lobos.
- Control Panel:** Located on the right side, it features a series of buttons for controlling the playlist, including "Fade", "Paused", and "Fade-N-Go".
- Bottom Bar:** Contains various system controls and status indicators, such as "Auto", "KRFC Default", "Macros", "Event Mode OFF", "Options Menu OFF", "Resync is ON", "Voice TRAC", "Sources", "BBAR", "Cart Deck", "Wall", and "Segue Editor".

Glossary

Control Room - The interface a programmer uses to interact with with NexGen automation

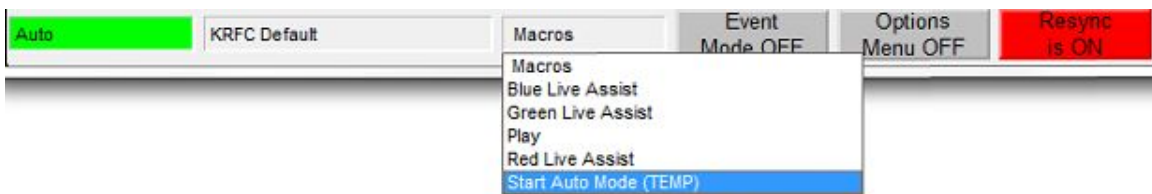
Event - A single song, promo, command line show in the Control Room

- Each event has a button to “Play” or “Eject (Delete)”

Block - A group of events that will all play one after another until done

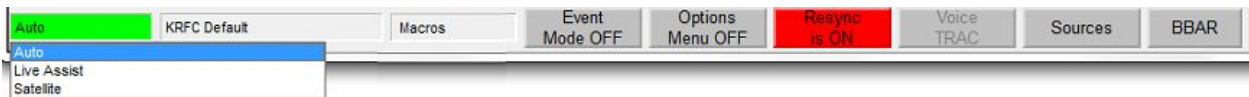
Macro - A list of commands that run “behind the scenes” when clicked. What you need:

- **Auto Mode Bypass (Macro)** - Puts automation on the air and the system in Auto Mode - The computer will run through the Events as shown.
- **Red Live Assist (Macro)** - Puts the red console on the air and the system in Live Assist. The on air programmer is in charge of what is played.



Mode - How NexGen plays Events - box on the bottom left tells you the mode that NexGen is in

- **Live Assist** - Each event plays one at a time (unless in a block)
- **Auto Mode** - Each event plays automatically, one after the other
- **Satellite** - A remote system is in charge - ie airing a show live from another venue



Spot Block - A block of audio and live read underwriting Events - All spots play automatically as a block

Big Play Button - Big Play Button plays next event at the top of the log

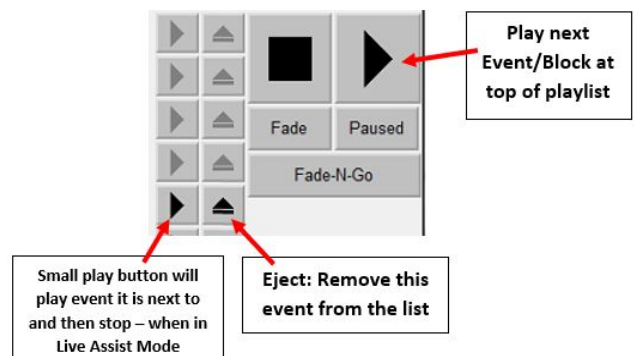
Small Play Button - Small Play Button plays a singular event that is clicked

Stop - Pauses Immediately

Fade - Quickly Fades event and Pauses

End - Pauses after event is done playing

Fade & Go - Quick Fade + Plays next Event



Programmer Instruction and Steps

The NexGen Control Room application is pinned to the Taskbar at the bottom of the Red Studio Computer.- *Click to Open*

Login is the same as the On Air Windows Login:

Step 1 - Log On! Click on NexGen icon in the taskbar.

- **Login: onair**
- **Pass: KRFC88.9**
- **Click on the Soundboard icon in the upper left that says “Control”**

Step 2 - Change Macro to Live Assist if needed

When you are in the studio it should be in Live Assist mode

- Click **MACROS**
- **Red Live Assist** to put the system in **Live Assist**

Only use the Macros to change Mode... this will perform all functions needed to keep the system in check

Step 3 - Eject “AUTO MODE BYPASS” Event

The first Event in the Playlist each hour needs to be ejected - it puts NexGen into Auto Mode and you want it in Live Assist

Step 4 - Check upcoming events for Top of Hour

Look at the list of events to see if you need to play or read anything at the top of the hour

Step 5 - Delete what you do not need

Delete any songs (in red) that you Do Not want to play

Step 6 - Spot Block Instructions help keep timeline

Leave the Spot Blocks and the instruction (Play at :10 after, etc...) to help you keep your timeline - Eject your “Play at...” instruction right before you play your Spot Block

Step 7 - Play All Spot Blocks

Turn up the fader for the NexGen channel and Press ON:

The ON button on the AUTO channel of the board will play the Event at the top of the playlist and then stop - similar to how the CD player plays one song and then stops

A **SPOT BLOCK** is a block of Events that are counted as one event. Click the ON button on the AUTO channel of the board when a Spot Block is at the top of the playlist will play ALL EVENTS in the Spot Block.

LIVE READS can be previewed by clicking the LIVE button next to the Event. When they come up during a Spot Block, the Live Read will open to be read (on top of a preview) and you must click the Resume button in the Live Read text box in order to complete the Spot Block.

DETAILED SPOT BLOCK INSTRUCTIONS - PLAY ALL SPOT BLOCKS

1. **Spot Block Instruction guide your timeline and say "Play at :10 After"** etc...
 - a. The instruction is not part of the Spot Block
 - b. Eject the instruction so the Spot Block event is at the top of the list
2. Pot up the NexGen Fader
3. **Press the ON button on the NexGen Fader** to trigger the Spot Block when you want to play - and the Spot Block event is at the top of the list - the same as starting a CD
 - a. Audio spots will play straight through and show the time left on the individual Event as well as the time left on the Spot Block at the top of the Control Room
 - b. Live Reads will pop up in their own window inside the Control Room
 - i. You can preview a Live Read by clicking the **LIVE** button next to their small play button
 - ii. The preview pops up, but the Live Read will still pop up in front when the Event is played
 - iii. Click Resume in the Live Read box to continue the Spot Block
4. Resume your show
5. Turn the NexGen Fader Button OFF to prepare for the next Event you want to play

If you do not play the spot - the system will not give us credit for playing the spot. We will use NexGen data to tell financial sponsors that we *ARE* playing their underwriting messages. We are lucky to have sponsors who are funding us without it but need to begin providing it.

This is critical to the sustained financial success of KRFC 88.9FM Radio Fort Collins!

A Visual Guide to the Control Room Instructions

The screenshot shows a software interface for a radio station. The top bar displays the date 'Thursday, February 14, 2019', the time '9:23:57', and the station call sign 'KRFC'. Below this is a table of events with columns for Pot #, Status, Air Time, Description, Event #, Length, and Text. The interface includes various control buttons like 'Pause', 'End Spot Block', and 'Fade-N-Go'. Red boxes with arrows point to specific elements in the interface, providing instructions on how to manage spot blocks.

Pot #	Status	Air Time	Description	Event #	Length	Text
B	Done	09:04:05-H	#5_KRFC_ID_Spearmak_mixdown.wav Q. : T.	LE00001H	00:20.37	
C	Done	09:04:28-H	Community Calendar Q. : T.			
	Done	09:09:35-H	Play at :10 after			
A			Generic Bump - Tim O'Brien W/Yodel Q. : T.	LI00208C	00:14.60	
	Pause		Spot Block Fill Length: 00:00.000 End Spot Block		00:00.00	
B			Mercedes Gil liner 1.wav Q. : T.			
			Play at :20 after			
			Spot Block Fill Length: 00:00.000		01:16.99	
C			High Country Bev 1-23-19 Q. : T.	01	00:29.98	
A			OCR Spot_12-20-18_mixdown.wav Q. : T.	01	00:41.56	
B			Generic Bump - Tommy Er Q. : T.	2	00:05.72	
			End Spot Block			
C			Mercedes Gil liner 2.wav Q. : T.	LI0001VB	00:09.56	
			Play at :45 after			
			Spot Block Fill Length: 00:00.000		01:14.96	
A			Music Go Round Promo 8-24-18.wav Q. : T.	0000005-001	00:40.04	

Annotations:

- Events turn BLUE after they have been played – if they are Eject the will not show in the Blue & cannot be recovered
- Delete this instruction! Have "Spot Block" as the top "white" Event so it will play when you press the fader ON
- Play this block at approx. 20 after the top of the hour
- A Spot Block plays promos and bumps in the block and then stops. Have AUTO fader up and click ON Button when it is at the top of the List
- Play this block at approx. 45 after the top of the hour

How do you know whether you should put in NexGen into Live Assist or Auto?

Are you the First Programmer in the Morning?

OR Are you taking the board after a show in Automation?

When you are on air turn on Red Live Assist.

Click *Macros at the bottom* and then click

“Red Live Assist”

This tells the computer that you are there and you will control what is being played from NexGen/Automation

Is the show after you in automation?

Turn on Auto Mode when you leave

Begin the show about 20 seconds after the top/bottom of the hour by turning the NexGen fader ON.

THEN...

Click *Macros* at the bottom and then click

“Start Auto Mode”

This is *critical* to keep the clocks in order.

If the system is in Live Assist mode when you leave - the show (event) you turned on will stop and nothing will play after - leaving dead air.